

Odenwald, Hinkel, Schauer

**Profiling Somali Militia:  
Providing data for demobilization and reintegration planning for  
personnel of armed groups in Somalia**

**Results of assessment in six regions**

***Annex 6: Results***

The section provides the reader with a more detailed description of the results using tables and figures.

The following sections are enclosed:

A6.1 Socio-demographic and combat-related information

A6.2 Physical and mental health

A6.3 Drug intake

A6.4 Gender-related economic variables

A6.5 Assistance wished

A6.6 Testing Hypothesis

A6.7 Testing the risk factor model

## Annex 6: Detailed description of results

### A6.1 Sociodemographic and combat information

Table A6.1: Socio-demographic information on respondents by region

Region	Total (8,124)	Corrected Total <sup>3</sup>	Somaliland (3,903)	Puntland (854)	Hiran (696)	Bay (604)	Mogadishu North (654)	Mogadishu South (814)	Kismaayo (599)
Variables									
Age of respondent <sup>1</sup>	37.3 (12.6)	34.5 (4.9)	41.3 (12.6)	37.1 (12.8)	39.6 (12.5)	30.5 (9.2)	29.1 (9.3)	30.3 (8.7)	34.1 (12.6)
% under 16 <sup>2</sup>	0.3	0.3	0.4	0.0	1.0	0.2	0.3	0.0	0.0
% 16 - 24.9 <sup>2</sup>	14.6	21.1	4.9	16.4	8.1	29.6	37.0	31.2	20.2
% 25 - 49.9 <sup>2</sup>	68.3	66.4	71.4	65.7	68.8	65.4	59.6	64.3	69.3
% > 49.9 <sup>2</sup>	16.7	12.3	23.2	17.9	22.1	4.8	3.1	4.5	10.5
% male	89.1	93.3	82.8	89.9	97.7	97.5	96.3	98.5	90.5
% married or widowed	67.5	63.3	73.4	76.8	71.0	63.1	52.0	49.1	57.9
Number of dependants <sup>1</sup>	6.2 (5.7)	5.9 (2.0)	6.8 (5.6)	9.2 (6.1)	7.2 (5.5)	4.8 (5.1)	3.4 (4.5)	4.3 (4.9)	5.5 (5.5)
Property in US\$ <sup>1</sup>	765 (1071)	848 (544)	677 (1077)	931 (918)	1225 (1001)	1765 (1308)	303 (564)	172 (221)	866 (1206)
% primary education	44.5	41.1	49.2	38.8	34.1	32.4	22.1	48.4	63.0
% literate	67.6	66.0	68.7	81.4	74.4	36.6	51.7	67.0	82.3
% numerate	62.6	58.8	66.8	76.5	55.0	32.5	37.5	65.4	77.6
% education completed	22.1	19.7	23.9	55.3	30.5	1.3	6.4	5.8	14.5
% vocational training	23.4	22.0	24.7	44.5	17.7	7.1	12.7	12.4	35.2
% job before war	52.8	55.0	49.3	71.8	18.5	84.9	45.9	58.6	55.9
% combat experience	65.1	75.0	48.4	82.1	84.1	100.0	70.2	96.9	43.1
% officers	0.9	0.5	1.4	1.2	0.1	0.0	0.5	0.0	0.3
% in former Somalia army	15.3	12.8	18.9	24.0	2.2	10.8	4.4	7.6	21.9
Number of private weapons owned <sup>1</sup>	0.68 (0.57)	0.73 (0.17)	0.63 (0.54)	0.57 (0.59)	0.47 (0.59)	0.90 (0.39)	0.81 (0.47)	0.86 (0.46)	0.87 (0.46)
Age of first combat <sup>1</sup>	22.9 (8.7)	22.3 (2.0)	24.8 (9.6)	23.5 (8.7)	24.2 (9.2)	21.6 (6.7)	20.0 (7.9)	19.8 (6.2)	22.0 (7.6)
% < 16 <sup>4</sup>	13.1	14.5	10.2	8.5	10.6	13.2	25.4	17.6	16.3
% 16 - 24.9 <sup>4</sup>	54.3	55.4	47.7	58.8	46.5	59.3	54.9	67.1	53.7
% 25 - 49.9 <sup>4</sup>	31.2	29.0	39.6	31.5	41.3	27.2	18.8	14.9	29.7
% > 49.9 <sup>4</sup>	1.4	1.0	2.4	1.2	1.6	0.3	0.9	0.4	0.4
Years in combat <sup>1</sup>	1.9 (2.6)	1.8 (0.7)	2.4 (2.5)	2.7 (3.4)	0.8 (0.9)	1.7 (2.8)	1.8 (3.2)	1.0 (1.3)	2.3 (3.8)

<sup>1</sup> mean (standard deviation)

<sup>2</sup> Proportion of the age group

<sup>3</sup> Expected value (Standard error)

<sup>4</sup> Proportion of the sample according to group of age of first combat

## Annex 6: Detailed description of results

Table A6.2: Property (of family): Average property per region and per age group within the regions are presented. Please refer Table A6.1 for the numbers of respondents in the respective cells.

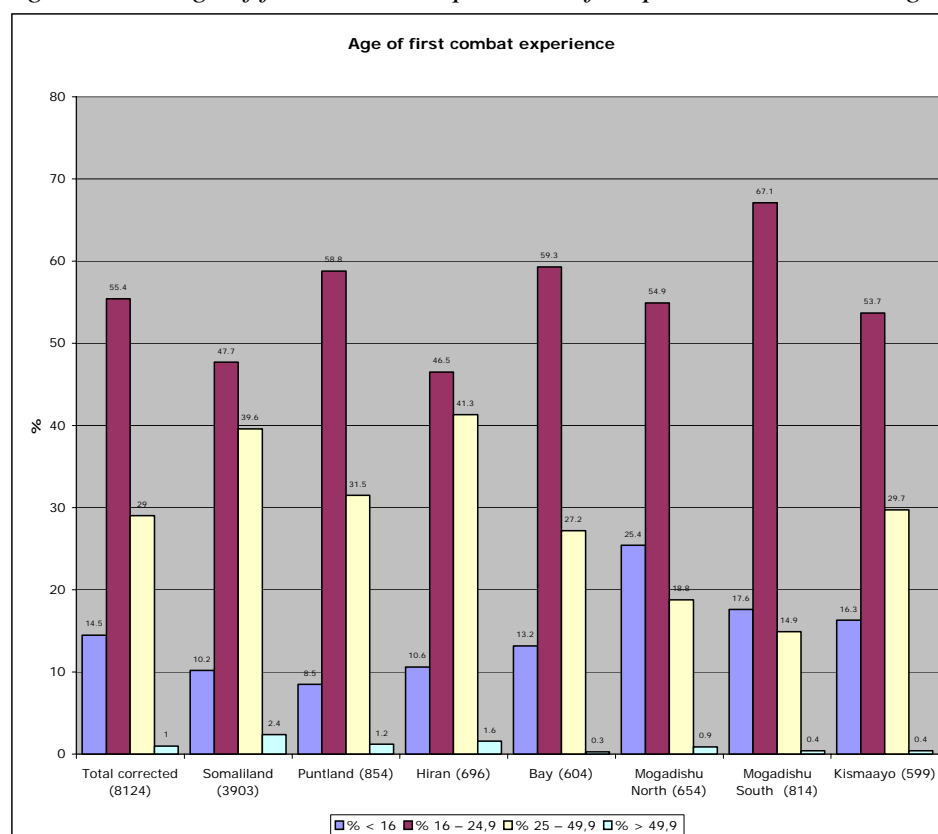
Region	Total (8,124)	corrected Total <sup>2</sup>	Somaliland (3,903)	Puntland (854)	Hiran (696)	Bay (604)	Mogadishu North (654)	Mogadishu South (814)	Kismaayo (599)
Property in US\$ <sup>1</sup>	765 (1071)	848 (544)	677 (1077)	932 (918)	1225 (1001)	1765 (1308)	303 (564)	172 (221)	866 (1206)
under 16 years	396 (785)	-	133 (352)	-	1109 (1161)	0	75 (106)	-	-
16 – 24.9 years	630 (990)	753 (599)	309 (638)	1000 (824)	1298 (1393)	1725 (1451)	242 (499)	164 (195)	536 (732)
25 – 49.9 years	772 (1099)	861 (544)	671 (1109)	958 (973)	1163 (938)	1793 (1271)	334 (576)	165 (193)	945 (1330)
50 years and above	862 (1015)	914 (496)	782 (1037)	770 (765)	1396 (1001)	1700 (779)	452 (935)	307 (522)	990 (949)
Correlation between age and property <sup>3</sup>	.06 (.000)	-	.08 (.000)	-.05 (.166)	.07 (.050)	.02 (.668)	.12 (.002)	.10 (.005)	.12 (.003)

<sup>1</sup> Mean (Standard deviation)

<sup>2</sup> Expected value (Standard error), see Annex 5

<sup>3</sup> Pearson correlation (significance, two-tailed, Alpha = .05)

Figure A6.1: Age of first combat experience of respondents in seven regions of Somalia.



## **Annex 6: Detailed description of results**

## Annex 6: Detailed description of results

Table A6.3: Socio-demographic and combat-related information on respondents by faction.

Region	Other (1,950)	Somaliland National Forces (3,844)	Juba Valley Alliance (568)	Hiran Court Forces (461)	RRA Sheik Adan/ Habsade (332)	RRA Hassan Mohamed Nur (262)	Hussein Aidiid (283)	Puntland Darawish Para-Military (193)	Muse Sudi Yalaxow (130)	Mohamed Qaryar (101)
Mean age <sup>1</sup>	34.5 (12.5)	41.4 (12.6)	33.9 (10.8)	36.5 (11.2)	31.2 (9.4)	29.7 (8.9)	30.5 (8.7)	37.0 (12.4)	27.8 (6.9)	29.4 (6.7)
% under 16	0.2	0.4	0.0	1.1	0.0	0.4	0.0	0.0	0.8	0.0
% under 25	24.3	5.1	20.2	12.1	28.9	30.9	28.3	17.1	36.9	30.7
% over 50	13.4	23.3	10.2	15.0	5.1	4.2	3.5	16.6	0.8	1.0
% male	96.4	82.7	89.8	97.6	98.8	95.8	89.4	88.1	93.8	100.0
% married	61.8	73.5	56.2	64.9	61.4	65.3	76.0	69.4	41.5	53.5
Number of dependents <sup>1</sup>	5.5 (5.8)	6.8 (5.6)	5.5 (5.6)	6.4 (5.1)	4.9 (5.6)	4.9 (4.5)	8.3 (5.5)	8.1 (6.5)	2.6 (3.3)	3.4 (4.2)
% primary education completed	38.9	48.9	65.4	28.9	38.5	25.6	32.5	41.0	41.6	49.5
% literate	68.7	68.6	82.7	69.0	42.8	29.4	72.8	81.3	56.9	69.3
% numerate	60.3	66.8	77.8	51.4	38.9	25.2	64.3	79.8	47.7	69.3
% education completed	21.0	24.1	12.3	27.5	0.6	2.3	53.0	51.3	3.1	4.0
% any vocational training	22.9	24.8	34.9	14.1	9.0	5.3	25.4	44.0	28.5	5.0
% job before war	51.1	49.1	57.6	24.3	79.5	91.2	76.3	60.6	56.9	61.4
% ever active in combat	82.9	47.9	40.8	83.5	100.0	100.0	100.0	100.0	100.0	100.0
% officers	0.5	1.4	0.4	0.0	0.0	0.0	0.7	2.7	0.0	0.0
% in former Somalia army	12.9	19.0	21.1	0.7	13.3	7.3	5.7	24.4	5.4	3.0
Number of private weapons owned <sup>1</sup>	0.71 (0.58)	0.62 (0.54)	0.83 (0.74)	0.54 (0.61)	0.89 (0.44)	0.92 (0.32)	0.90 (0.28)	0.31 (0.51)	0.88 (0.45)	0.91 (0.35)

<sup>1</sup> Mean (Standard deviation)

## Annex 6: Detailed description of results

Table A6.4: Age of first combat experience among respondents by factions.

	Total <sup>1</sup> (5,112)	Other (1,582)	Somaliland National Forces (1,739)	Juba Valley Alliance (219)	Hiran Court Forces (375)	RRA Sheik Adan/ Habsade (328)	RRA Hassan Mohamed Nur (261)	Hussein Aidiid (234)	Puntland Darawish Para-Military (157)	Muse Sudi Yalaxow (118)	Mohamed Qaryar (99)
Age of first combat experience <sup>1 2</sup>	22.8 (8.0)	21.5 (7.4)	24.7 (8.9)	22.2 (7.1)	24.0 (8.3)	21.4 (6.8)	22.2 (6.6)	20.5 (5.3)	24.2 (7.8)	18.7 (5.2)	20.4 (4.8)
% under 16	13.1	16.7	10.0	15.9	10.6	14.9	11.5	9.8	9.6	26.3	10.1
% 16 – 24.9	54.3	57.7	47.1	53.2	47.8	59.6	58.2	74.9	51.0	61.0	74.7
% 25 – 49.9	31.2	24.7	40.3	30.5	39.8	25.2	29.9	14.9	39.5	12.7	15.2
% 50 and above	1.4	1.0	2.5	0.5	1.8	0.3	0.4	0.4	0.0	0.0	0.0
Years active in combat <sup>1</sup>	1.9 (2.6)	1.6 (2.2)	2.4 (2.5)	2.5 (4.0)	0.7 (0.8)	2.4 (3.3)	0.7 (1.6)	2.9 (4.9)	2.1 (2.1)	1.5 (2.5)	0.8 (1.0)

<sup>1</sup> Reduced N because of the fact that not all respondents had combat experience

<sup>2</sup> Mean (Standard deviation)

## Annex 6: Detailed description of results

Table A6.5: Socio-demographic and combat-related information by militia type.

	Regional authorities (4070)	Juba Valley Alliance (568)	Sharia court militia (481)	Warlord militia (1722)	Business militia (78)	Other militia e.g. freelance (1090)
Age <sup>1</sup>	41.3 (12.7)	33.9 (10.8)	36.6 (11.4)	30.2 (9.1)	33.7 (9.7)	36.4 (13.0)
% under 16 <sup>2</sup>	0.4	0.0	1.0	0.2	0.0	0.2
% 16 – 24.9 <sup>2</sup>	5.3	20.2	10.9	31.9	14.1	19.2
% 25 – 49.9 <sup>2</sup>	70.9	69.5	72.7	63.6	80.8	63.6
% 50 or older <sup>2</sup>	23.4	10.2	15.4	4.3	5.1	17.0
% male	83.0	89.9	97.7	96.2	100	95.3
% married or widowed	81.9	60.2	67.2	60.4	88.5	66.4
Number of dependants <sup>3</sup>	6.9 (5.7)	5.5 (5.6)	6.4 (5.0)	4.9 (5.2)	6.9 (7.2)	6.0 (6.0)
Property in US\$	685 (1067)	844 (1204)	1203 (1043)	915 (1156)	880 (1095)	596 (789)
% primary education	48.6	64.4	29.7	36.8	23.1	38.9
% literate	69.4	82.7	69.4	55.5	61.5	72.0
% numerate	67.6	77.8	52.0	49.8	41.0	62.7
% education completed	25.8	12.3	26.6	14.3	2.6	25.8
% vocational training	26.1	34.9	14.1	13.2	11.5	28.3
% job before war	49.6	57.6	24.9	68.9	78.2	49.4
% combat experience	49.8	40.8	83.4	93.6	47.4	80.8
% officers	1.4	0.4	0.0	0.1	0.0	0.6
% in former Somalia army	19.8	21.1	1.5	8.1	7.7	12.9
Number of private weapons owned <sup>3</sup>	0.61 (0.55)	.83 (.74)	0.56 (0.61)	0.87 (0.42)	0.97 (0.40)	0.64 (0.63)
Age of first combat experience <sup>1</sup>	25.0 (9.5)	22.2 (7.1)	24.3 (9.0)	20.6 (6.4)	23.4 (7.9)	22.5 (8.3)
% < 16 <sup>4</sup>	9.9	15.9	10.6	16.0	8.1	15.1
% 16 – 24.9 <sup>4</sup>	47.0	53.2	47.3	63.4	56.8	56.2
% 25 – 49.9 <sup>4</sup>	40.7	30.5	40.0	20.2	35.1	27.6
% 50 or older <sup>4</sup>	2.4	0.5	2.0	0.4	0.0	1.1
Years in combat <sup>1</sup>	1.2 (2.1)	1.0 (2.8)	0.6 (1.0)	1.7 (2.7)	0.5 (1.8)	1.2 (1.8)

<sup>1</sup> mean (standard deviation)

<sup>2</sup> Proportion of the age group

<sup>3</sup> Expected value (Standard error)

<sup>4</sup> Proportion of the sample according to group of age of first combat

## Annex 6: Detailed description of results

*Table A6.6: Reasons of the respondents for joining an armed group by region. Multiple answers were allowed. Answers are presented as percentages of respondents who admitted that a specific reason applied for them. We divide the respondents in those with and without combat experience.*

Reason for joining	Combat exposure	Total (2837 <sup>1</sup> / 5287 <sup>2</sup> )	corrected Total	Somaliland (2012 <sup>1</sup> / 1891 <sup>2</sup> )	Puntland (153 <sup>1</sup> / 701 <sup>2</sup> )	Hiran (111 <sup>1</sup> / 585 <sup>2</sup> )	Bay (- / 604 <sup>2</sup> )	Mogadishu North (195 <sup>1</sup> / 459 <sup>2</sup> )	Mogadishu South (25 <sup>1</sup> / 789 <sup>2</sup> )	Kismaayo (341 <sup>1</sup> / 258 <sup>2</sup> )
Income	no	67.6	53.1	72.4	43.1	55.9	-	74.9	76.0	49.6
	yes	40.7	43.8	33.7	36.8	52.6	2.3	73.4	60.3	47.3
Self-defense	no	16.8	30.2	3.2	68.0	23.4	-	36.9	20.0	60.1
	yes	63.2	65.3	54.6	74.6	49.7	87.3	58.2	67.3	65.1
Protection of family	no	8.0	14.4	0.3	30.1	2.7	-	14.9	12.0	40.5
	yes	21.5	26.9	10.8	39.2	14.9	29.5	30.9	16.2	46.9
To re-establish law and order	no	9.0	16.4	3.8	48.4	15.3	-	14.9	16.0	16.4
	yes	21.2	24.9	9.1	55.3	35.9	7.3	14.2	19.6	32.6
Political motives	no	3.0	5.0	0.2	1.3	6.3	-	6.7	4.0	16.4
	yes	6.7	7.9	5.4	1.4	2.9	17.2	17.0	2.3	8.9
Revenge	no	2.2	3.8	0.1	1.3	9.9	-	3.6	0	11.4
	yes	4.4	5.3	3.8	1.4	5.6	1.5	11.5	3.8	9.3
By force	no	1.1	2.2	0.3	1.3	10.8	-	1.5	0	1.8
	yes	2.5	2.5	1.5	2.7	2.9	1.0	3.1	5.8	0.4
Other reasons	no	18.2	8.6	22.5	11.1	7.2	-	17.9	0	1.2
	yes	3.6	3.1	5.4	5.7	1.0	0.5	2.2	1.8	5.4

<sup>1</sup> number of respondents without combat experience

<sup>2</sup> number of respondents with combat experience



## Annex 6: Detailed description of results

Table A6.7: Reasons of the respondents for joining an armed group by factions. Multiple answers were allowed. Answers are presented as percentages of respondents who admitted that a specific reason applied for them. We divide the respondents in those with and without combat experience.

Reason for joining	Combat exposure	Other (333 / 1617)	Somaliland National Forces (2003 / 1841)	Juba Valley Alliance (336 / 232)	Hiran Court Forces (76 / 385)	RRA Sheik Adan/ Habsade (- / 332)	RRA Hassan Mohamed Nur (- / 262)	Hussein Aidiid (47 / 236)	Puntland Darawish Para-Military (33 / 160)	Muse Sudi Yalaxow (9 / 121)	Mohamed Qaryar (- / 101)
Income	no	67.6	72.6	48.2	55.3	-	-	17.0	60.6	77.8	-
	yes	57.9	33.1	46.1	45.2	2.1	2.7	32.2	53.8	54.4	81.2
Self-defense	no	38.4	3.0	61.3	21.1	-	-	80.9	69.7	55.6	-
	yes	59.2	55.1	65.1	59.2	83.1	93.5	79.7	76.9	68.6	74.3
Protection of family	no	16.2	0.3	41.7	2.6	-	-	19.1	36.4	22.2	-
	yes	25.0	11.0	46.1	18.7	11.4	52.3	21.2	53.1	29.8	3.0
To re-establish law and order	no	22.5	3.8	16.7	13.2	-	-	23.4	81.8	11.1	-
	yes	29.0	9.2	35.3	27.8	3.3	11.8	45.3	66.9	10.7	21.8
Political motives	no	4.5	0.2	17.0	6.6	-	-	0.0	0.0	22.2	-
	yes	5.9	5.4	9.9	3.4	2.4	36.6	2.1	1.9	6.6	0.0
Revenge	no	2.4	0.1	11.6	13.2	-	-	0.0	0.0	22.2	-
	yes	4.9	3.8	9.1	7.8	1.5	1.5	1.3	4.4	5.8	4.0
By force	no	1.5	0.3	2.1	13.2	-	-	0.0	3.0	0.0	-
	yes	4.3	1.4	0.4	1.6	0.9	0.8	3.8	1.9	9.9	0.0
Other reasons	no	17.7	22.4	0.6	6.6	-	-	0.0	6.1	0.0	-
	yes	2.8	5.5	5.6	0.5	0.3	0.8	1.7	8.1	2.5	3.0

**Annex 6: Detailed description of results**

---

<sup>1</sup> number of respondents without combat experience

<sup>2</sup> number of respondents with combat experience

## Annex 6: Detailed description of results

*Table A6.8: Reasons of the respondents for joining an armed group by militia types. Multiple answers were allowed. Answers are presented as percentages of respondents who admitted that a specific reason applied for them. We divide the respondents in those with and without combat experience.*

Reason for joining	Combat exposure	Regional authorities (2044 / 2026)	Juba Valley Alliance (336 / 232)	Sharia court militia (80 / 401)	Warlord militia (110 / 1612)	Business militia (41 / 37)	Other militia e.g. freelance (209 / 881)
Income	no	72.4	48.2	57.5	47.3	61.0	66.0
	yes	35.3	46.1	45.4	34.9	67.0	56.0
Self-defense	no	4.2	61.3	20.0	62.7	17.1	38.8
	yes	56.9	65.1	58.6	74.9	35.1	58.9
Protection of family	no	1.0	41.7	2.5	17.3	2.4	17.7
	yes	14.3	46.1	18.5	22.9	10.8	29.6
To re-establish law and order	no	5.4	16.7	12.5	18.2	14.6	24.4
	yes	14.6	35.3	28.4	18.7	21.6	33.7
Political motives	no	0.2	17.0	6.3	6.4	0.0	3.8
	yes	5.1	9.9	3.7	9.2	16.2	4.9
Revenge	no	0.1	11.6	12.5	3.6	0.0	2.9
	yes	3.8	9.1	8.0	3.3	5.4	4.2
By force	no	0.4	3.1	12.5	0.0	2.4	1.4
	yes	1.5	0.4	1.7	3.7	5.4	3.2
Other reasons	no	22.2	0.6	6.3	2.7	24.4	21.1
	yes	5.9	5.6	0.5	1.3	2.7	3.4

<sup>1</sup> number of respondents without combat experience

<sup>2</sup> number of respondents with combat experience

**Annex 6: Detailed description of results**

## Annex 6: Detailed Information on Results

### A6.2 Physical and mental health of respondents

Table A6.9: Physical condition of respondents by region

Region	Total (8,124)	Corrected Total <sup>2</sup>	Somaliland (3,903)	Puntland (854)	Hiran (696)	Bay (604)	Mogadishu North (654)	Mogadishu South (814)	Kismaayo (599)
% Mine wounds	1.1	0.8	1.5	0.8	0.4	0.3	1.4	0.4	0.7
% Bullet wounds	5.5	7.0	3.2	12.5	2.2	3.1	24.8	0.7	2.7
% other injury	7.2	4.6	11.0	5.0	3.3	1.2	7.3	3.6	1.0
% missing limb	2.6	2.0	3.4	5.2	0.1	1.2	2.6	0.6	0.7
% Limb not functioning	2.8	2.5	2.9	9.5	0.4	1.2	1.7	0.6	1.5
% Blind	0.6	0.5	0.8	0.2	0.9	0.7	0.3	0.2	0.5
% Paralyzed	1.3	0.8	2.1	0.7	1.3	0.0	0.5	0.0	0.7
% other impairment	5.9	5.9	6.2	3.7	2.7	1.8	24.5	1.2	1.5
Somatic symptoms <sup>1</sup>	0.44 (0.98)	0.61 (0.36)	0.21 (0.64)	0.42 (0.88)	1.01 (1.44)	0.53 (0.99)	1.13 (1.37)	0.25 (0.72)	0.69 (1.35)
% somatic symptoms	21.7	28.2	12.7	25.5	40.7	28.6	50.0	14.3	25.7

<sup>1</sup> Mean (Standard deviation)

<sup>2</sup> Expected value (Standard error)

Table A6.10: Weight of respondents according to Body Mass Index (BMI) by region. Also displayed is the percentage of groups defined by the BMI in the respective regions.

Region	Total (8,124)	Corrected Total <sup>2</sup>	Somaliland (3,903)	Puntland (854)	Hiran (696)	Bay (604)	Mogadishu North (654)	Mogadishu South (814)	Kismaayo (599)
BMI <sup>1</sup>	19.8 (3.7)	19.8 (0.4)	19.9 (4.0)	20.2 (3.6)	20.3 (3.4)	19.3 (2.9)	19.6 (4.1)	19.3 (2.9)	20.0 (3.2)
% < 18.5	41.0	39.6	43.3	35.5	31.6	43.0	44.7	43.4	35.4
% 18.5 - 24.9	49.9	52.6	45.7	52.9	59.9	53.5	47.5	52.0	56.7
% 25 – 29.9	7.8	6.9	9.0	10.8	7.4	2.8	6.6	4.0	7.9
% >29.9	1.3	0.9	2.0	0.8	1.0	0.7	1.2	0.6	0.0

<sup>1</sup> Mean (Standard Deviation)

<sup>2</sup> Expected value (Standard error)

## Annex 6: Detailed Information on Results

Table A6.11: War trauma and psychological breakdown

	Total (8,124)	corrected Total <sup>4</sup>	Somaliland (3,903)	Puntland (854)	Hiran (696)	Bay (604)	Mogadishu North (654)	Mogadishu South (814)	Kismaayo (599)
% with pPTSD	5.6	8.1 (7.8)	2.2	1.8	6.3	2.5	24.0	10.1	9.7
% with full PTSD <sup>1</sup>	12.5	16.5	10.2	10.0	12.9	10.4	24.6	15.5	15.2
Sum trauma symptoms <sup>2</sup>	1.3 (1.6)	1.8 (0.7)	0.5 (1.1)	1.8 (1.0)	2.0 (1.6)	1.8 (1.3)	3.0 (1.6)	2.2 (1.5)	1.5 (1.7)
% helpless/ terrified	60	69 (21.0)	41	48	67	60	88	97	83
% intrusions	39	53 (23.8)	16	44	55	57	82	82	37
% avoid to think/talk	36	50 (22.5)	12	84	48	43	69	49	46
% shattered future	18	26 (14.6)	7	20	34	31	52	17	20
% sleeping problems	19	26 (17.0)	7	14	30	16	56	40	22
% jumpiness	17	24 (11.7)	6	14	27	32	41	29	20
% with mental breakdown	4.0	4.6 (5.2)	3.0	0.9	15.7	1.3	3.7	5.9	1.7
Year when breakdown happened <sup>3</sup>	2000 (1974 – 2003)	-	1995 (1974 – 2003)	2000 (1992 – 2003)	2000 (1984 – 2003)	2000 (1991 – 2003)	2000 (1991 – 2003)	2002 (1991 – 2003)	2000 (1985 – 2003)
% Paranoid ideas	4.9	7.2 (4.1)	1.3	4.1	7.8	4.3	9.6	13.1	10.0
% War experience still hurts	11.2	15.9 (15.6)	4.8	4.9	14.9	6.3	49.5	15.6	15.2
% Drug intake in order to forget war	19.4	29.2 (19.7)	5.2	6.0	20.3	41.7	48.5	53.6	29.4

<sup>1</sup> Estimation based on a calculation derived from a previous study (Odenwald submitted)

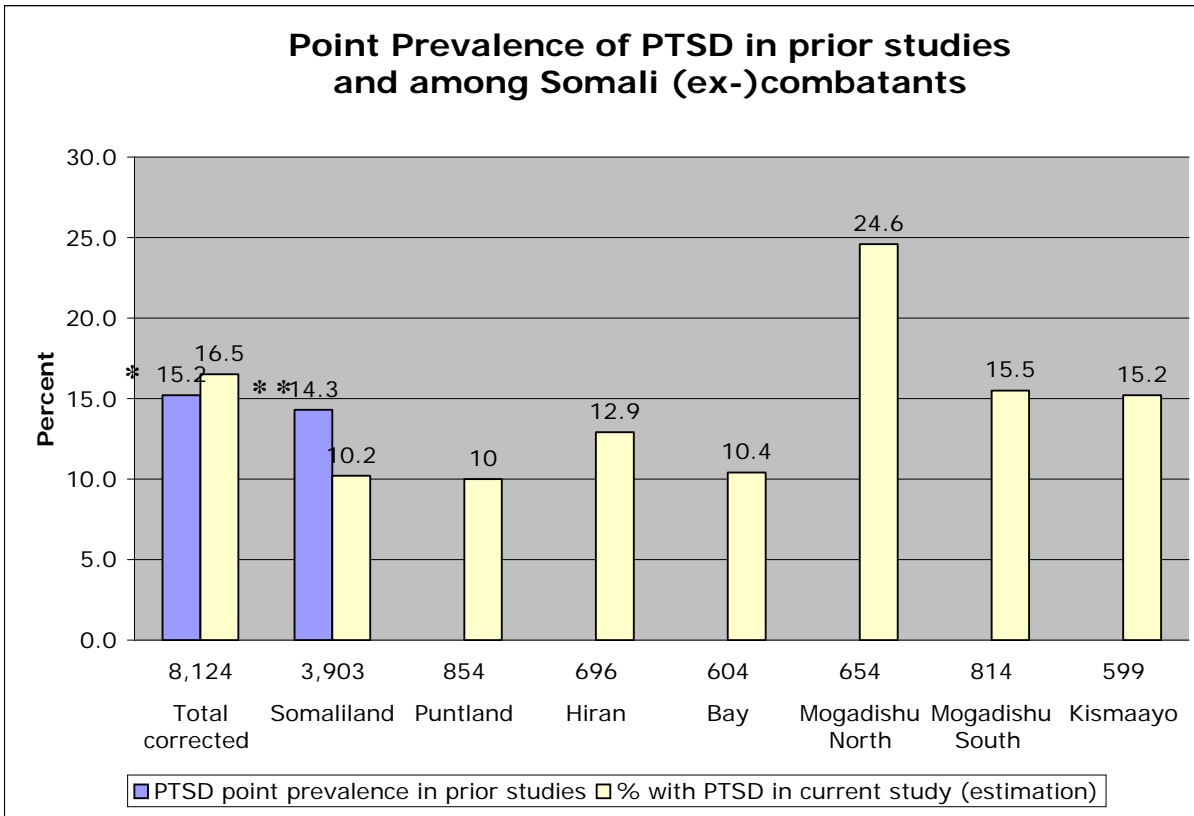
<sup>2</sup> Mean (Standard Deviation)

<sup>3</sup> Median (range)

<sup>4</sup> Expected value (Standard error)

**Annex 6: Detailed Information on Results**

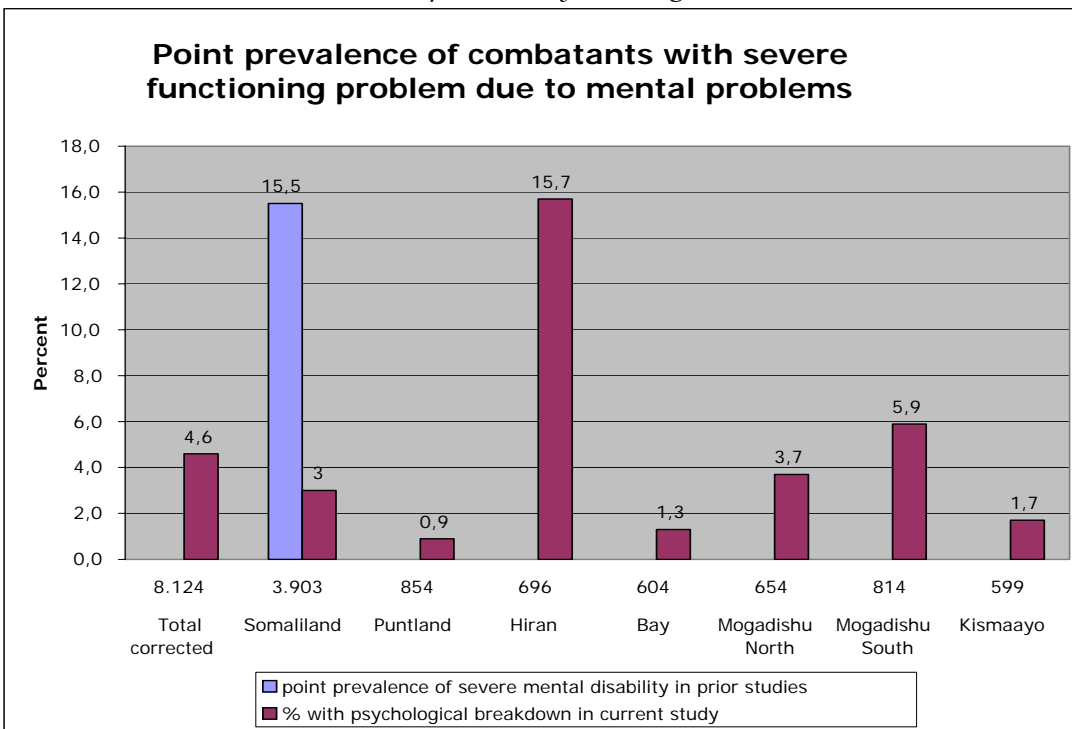
*Figure A6.2: Estimation of point prevalence of PTSD in this assessment (yellow bars) and of PTSD in prior assessments (blue bars).*



\* Point prevalence in US-Veterans, National Vietnam Veterans Readjustment Study, Kulka et al., 1990

\*\* GTZ/vivo assessment 2002

*Figure A6.3: Point prevalence of psychological breakdown in our sample (red bars) and severe mental disorder in a prior study in Hargeisa (blue bar; Odenwald et al., 2005).*



## Annex 6: Detailed Information on Results

### *A6.3 Drug intake*

*Table A6.12: Individual khat intake and related psychopathology by region.*

	Total (8,124)	corrected Total <sup>4</sup>	Somaliland (3,903)	Puntland (854)	Hiran (696)	Bay (604)	Mogadishu North (654)	Mogadishu South (814)	Kismaayo (599)
% khat intake	36.4	42.0	29.7	10.5	26.6	69.4	47.7	61.4	48.6
% more than 2 bundles	33.0	38.9	26.1	4.7	23.1	66.9	44.2	59.2	48.1
Consumed khat bundles <sup>1,2,3</sup>	9.8 (11.4)	10.1 (6.2)	5.9 (6.5)	3.4 (5.4)	6.3 (6.7)	7.6 (6.1)	10.8 (11.1)	15.9 (13.5)	20.8 (18.4)
Sleepless nights, due to khat <sup>1,2,3</sup>	3.4 (1.8)	3.4 (0.6)	3.9 (2.4)	2.7 (1.9)	3.8 (1.7)	3.3 (1.8)	3.6 (1.9)	3.7 (1.3)	2.5 (1.2)
% 2 or more sleepless nights <sup>2,3</sup>	15.8	24.2	4.0	2.7	18.4	39.9	30.4	42.6	31.2
% hallucination among chewers	14.8	17.2	6.5	9.2	23.7	4.1	34.7	30.9	11.0
% paranoia among chewers	8.9	10.6	2.8	8.9	7.0	4.3	14.4	18.2	18.9
% paranoia among non-chewers	2.6	4.1	0.7	3.5	8.0	4.3	5.3	5.1	1.6
% chewing alone	5.6	7.7	3.1	2.8	3.3	11.9	11.2	6.1	15.2

<sup>1</sup> Mean (Standard Deviation)

<sup>2</sup> only chewers included

<sup>3</sup> in week before the interview

<sup>4</sup> Expected Value (Standard error)

*Figure A6.4: Percentage of paranoid psychotic symptoms among three groups of respondents : (1) khat abstinent in the week before the interview, (2) khat consumers in the week before the interview, preferred setting of consumption is group, (3) khat consumers in the week before the interview, preferred setting of intake is withdrawn from others (we report here uncorrected values).*



## Annex 6: Detailed Information on Results

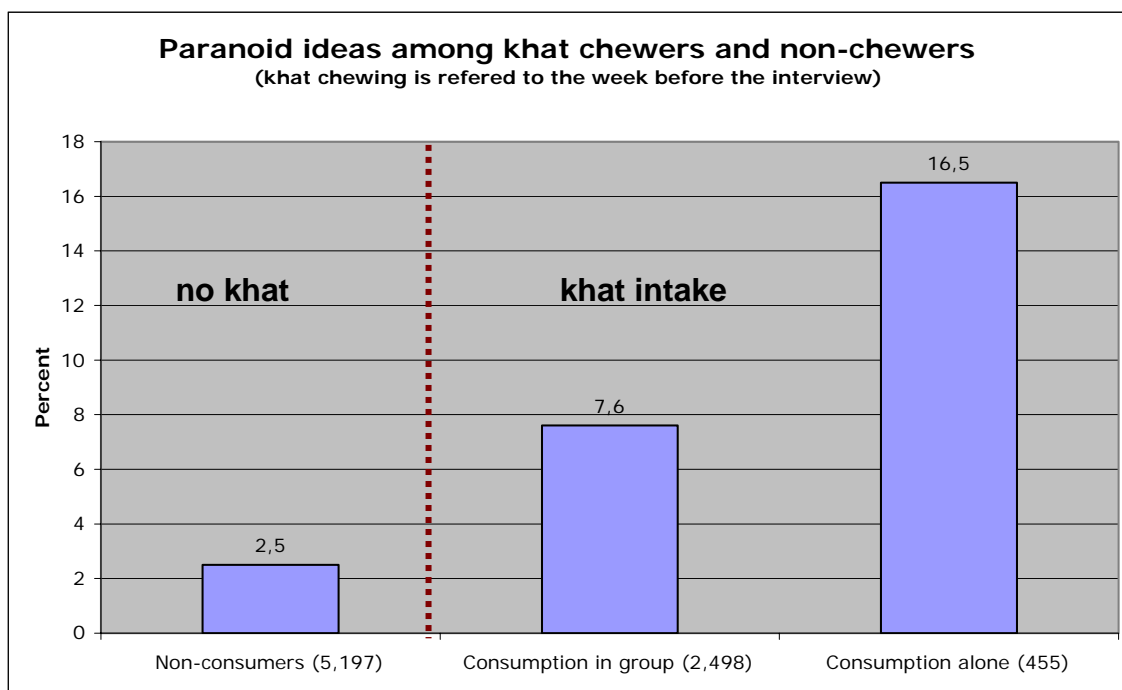


Table A6.13: Interviewer recommendations by regions: Interviewers recommended for each of their interviewees independently of what respondent said if they would need to be seen by a medical doctor or by a mental health specialist/psycho-social expert.

Region	Total (8,124)	corrected Total <sup>1</sup>	Somaliland (3,903)	Puntland (854)	Hiran (696)	Bay (604)	Mogadishu North (654)	Mogadishu South (814)	Kismaayo (599)
% should see a medical doctor	10.8	13.7 (6.8)	6.6	17.9	19.5	13.6	8.4	6.4	23.4
% should see a psycho-social expert	20.2	29.8 (17.6)	7.1	9.1	44.0	39.7	54.1	27.9	26.4

<sup>1</sup> Expected value (Standard error)

Table A6.14: Drug consumption in primary social group of the respondents (military unit) by region. For each drug we asked, whether its consumption exists in the unit and what was the percentage of unit members who consumed it in the last week.

	Total (8,124)	Corrected Total <sup>2</sup>	Somaliland (3,903)	Puntland (854)	Hiran (696)	Bay (604)	Mogadishu North (654)	Mogadishu South (814)	Kismaayo (599)
% khat consumption exists	96.5	97.2	95.2	97.3	99.1	99.2	93.1	98.5	98.2
Proportion of unit chews khat <sup>1</sup>	70.1 (23.5)	69.5 (7.8)	71.7 (24.1)	60.5 (23.6)	63.5 (20.5)	80.7 (19.4)	61.4 (29.5)	72.8 (15.8)	75.8 (16.7)
% hashish smoking exists	40.4	59.2	15.3	18.3	76.1	89.7	60.7	63.8	90.8
Proportion of unit smokes hashish <sup>1</sup>	10.6 (19.8)	18.2 (14.4)	1.0 (4.7)	0.5 (2.7)	15.7 (18.2)	38.1 (23.8)	20.8 (24.2)	18.4 (22.1)	33.2 (26.2)
% taking tablets exists	34.9	53.8	9.2	16.6	68.5	87.3	50.9	59.3	85.1

## Annex 6: Detailed Information on Results

Proportion of unit takes tablets <sup>1</sup>	8.5 (17.1)	14.4 (10.9)	0.7 (5.1)	0.6 (3.1)	13.4 (16.9)	30.2 (23.7)	16.1 (22.0)	17.7 (20.2)	22.6 (21.1)
% alcohol drinking exists	30.6	41.3	17.1	16.7	32.0	78.3	34.1	42.4	68.8
Proportion of unit drinks alcohol <sup>1</sup>	5.3 (13.0)	8.2 (7.0)	1.7 (7.1)	0.6 (3.1)	2.8 (8.1)	19.8 (20.3)	11.7 (21.3)	8.3 (15.3)	12.8 (14.5)
% sniffing drugs exists	16.9	24.8	6.6	16.4	16.2	56.3	23.1	18.9	36.1
Proportion of unit inhales/sniffs drugs <sup>1</sup>	1.8 (6.6)	3.0 (3.1)	0.2 (2.4)	0.2 (1.3)	1.9 (6.5)	9.2 (13.8)	3.7 (10.2)	2.3 (7.0)	3.3 (6.9)
% banji-seeds exist	7.6	13.4	0.5	6.0	8.0	50.7	5.8	6.8	15.7
Proportion of unit eats banji seeds <sup>1</sup>	0.6 (3.4)	1.0 (1.5)	0.0 (0.3)	0.1 (0.9)	0.9 (4.7)	4.4 (8.0)	0.5 (4.5)	0.7 (3.8)	0.4 (1.7)

<sup>1</sup> Mean (Standard Deviation)

<sup>2</sup> Expected value (Standard error)

## Annex 6: Detailed Information on Results

### A6.4 Gender-related information

*Table A6.13: Gender-related economic information: Participants were asked (a) whether they would share reintegration assistance with their spouse (row 1), (b) who takes economic decisions in the household (rows 2 and 3) and (c) What would be the percentage of reintegration assistance that could be directly given to their spouse (row 4).*

Region	Total (8,124)	Corrected Total <sup>4</sup>	Somaliland (3,903)	Puntland (854)	Hiran (696)	Bay (604)	Mogadishu North (654)	Mogadishu South (814)	Kismaayo (599)
% willing to share with spouse <sup>1</sup>	80.0	88.3	70.1	92.2	89.5	96.3	85.4	94.8	90.0
% takes economic decision all alone: married <sup>1</sup>	32.8	31.4	34.1	38.6	22.8	49.9	43.4	14.6	16.5
% takes economic decision all alone: singles <sup>2</sup>	88.4	89.3	85.5	96.2	78.0	97.3	78.6	92.9	96.9
Percentage of assistance to partner <sup>1,3</sup>	56.8 (35.7)	58.5 (7.3)	53.8 (40.1)	71.1 (27.3)	52.1 (27.8)	63.4 (24.7)	50.2 (31.5)	60.2 (21.3)	58.9 (27.1)

<sup>1</sup> only included: married respondents, N = 5,896

<sup>2</sup> only included: single or divorced respondents, N = 2,220

<sup>3</sup> Mean (Standard Deviation)

<sup>4</sup> Expected value (Standard error)

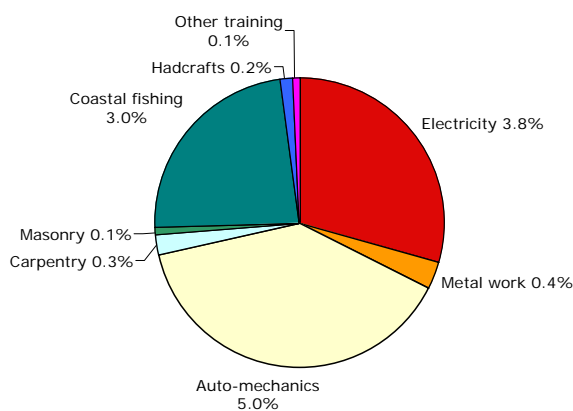
## Annex 6: Detailed Information on Results

### A6.5 Assistance wished

In this section we'll provide detailed information on the respondents' choices of reintegration tools. Table A6.14 shows the first and second choice of reintegration assistance wished per region. Corrected total values were calculated on the basis of the regional data. Table A6.15 shows choice of reintegration assistance among the largest factions/military groups. Table A6.16 shows the same for the different types of militia/military groups. Table A6.17 tries to answer the question 'What is the second choice of respondents who have a specific first choice? Here we show, e.g. the percentage of respondents with 'Return to formal schooling' as first reintegration choice who want 'Grant for SME' as second choice.

Figure A6.5. shows the demand for specific vocational skills of those respondents who selected vocational training as first or second reintegration assistance.

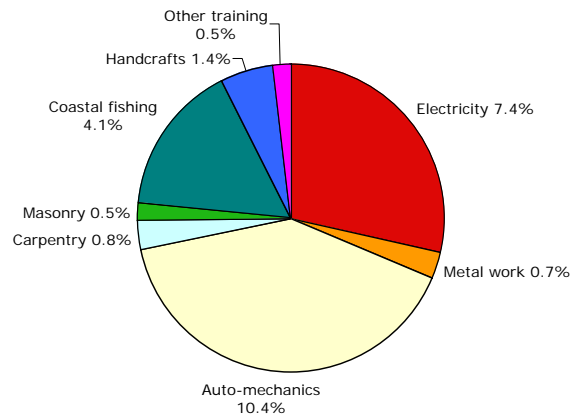
*Figure A6.5: What kind of vocational skills (former) combatants in Somalia would like to learn as first choice reintegration assistance (upper) or second choice (below)-*



*12.9% of respondents selected vocational training as first choice assistance*

## Annex 6: Detailed Information on Results

*25.8% of respondents selected vocational training as second choice reintegration assistance.*



## Annex 6: Detailed Information on Results

Table A6.14: Reintegration assistance wished by respondents by regions. Numbers indicate percentages in the respective regions. The first choice is in the upper row, the second choice in the lower (gray-shaded). In brackets are numbers of respondents.

Regions		Total (8,124)	Corrected Total <sup>3</sup>	Somaliland (3,903)	Puntland (854)	Hiran (696)	Bay (604)	Mogadishu North (654)	Mogadishu South (814)	Kismaayo (599)
Reintegration tools										
Return to formal education		18,1	28,4	3,8	7,0	12,1	69,4	38,8	45,2	22,7
		6,2	7,4	4,5	4,8	6,2	5,1	15,4	7,5	8,5
Public works		1,5	2,5	0,3	1,2	3,6	5,6	3,4	1,2	2,3
		2,9	4,2	1,4	1,2	6,2	7,0	2,0	3,2	8,2
Private security sector		1,2	1,7	0,6	0,9	1,9	2,5	1,1	2,6	2,0
		5,3	5,9	4,6	6,1	1,4	12,4	2,0	8,0	6,5
Grant for SME		52,5	38,9	72,2	54,8	40,4	9,3	25,7	27,9	41,7
		20,2	23,9	14,3	29,3	26,9	13,6	32,4	23,7	27,2
Rural integration		8,9	9,1	8,9	8,0	19,0	5,3	4,6	4,3	13,4
		21,0	17,2	26,9	23,2	28,3	21,7	3,5	4,8	12,2
Training on the job		2,0	2,8	0,8	0,1	4,7	5,1	2,3	3,6	3,3
		6,5	7,8	4,6	0,8	8,8	8,1	5,7	17,1	9,3
Vocational training	Electricity	2,7	3,8	0,9	2,0	6,3	0,2	6,7	5,9	4,3
		5,9	7,4	3,6	6,0	8,3	7,0	9,6	11,2	6,0
	Auto- mechanics	3,6	5,0	1,3	4,0	9,3	0,8	10,2	6,5	2,7
		7,6	10,4	3,3	5,9	10,3	15,9	14,2	18,4	4,8
	Metal work	0,3	0,4	0,1	0,1	0,3	0,2	1,2	0,0	1,2
		0,6	0,7	0,4	0,0	0,0	2,5	0,5	0,0	1,8
	Carpentry	0,3	0,3	0,4	0,1	0,9	0,0	0,5	0,1	0,3
		1,1	0,8	1,6	0,1	0,3	0,3	1,7	0,4	1,3
	Masonry	0,1	0,1	0,1	0,0	0,0	0,0	0,2	0,2	0,0
		0,6	0,5	0,8	0,8	0,1	0,8	0,8	0,0	0,0
	Handcrafts	0,1	0,2	0,0	0,4	0,1	0,0	0,2	0,1	0,7
		1,3	1,4	1,2	1,5	0,1	2,5	1,7	0,2	2,5
	Coastal fishing	2,2	3,0	0,2	14,2	0,1	0,0	1,1	0,9	4,8
		3,2	4,1	1,4	13,1	0,1	0,2	3,2	1,2	9,5
	Other training	0,0	0,1	0,0	0,0	0,1	0,0	0,2	0,0	0,0
		0,4	0,5	0,2	0,2	0,6	0,7	1,5	0,0	0,3
Other assistance		1,7	2,1	1,0	6,6	0,9	1,5	3,8	0,6	0,0
		3,3	2,8	3,8	5,5	1,4	1,8	4,7	1,6	0,8
No assistance wanted		4,7	1,7	9,2	0,7	0,3	0,2	0,2	0,9	0,5
		13,8	5,0	27,3	1,5	0,9	0,5	1,1	2,7	0,8

## Annex 6: Detailed Information on Results

Table A6.15: Reintegration assistance wished by respondents by factions/military groups. Numbers indicate percentages in respective factions/armed groups. The first choice is in the upper row, the second choice in the lower (gray-shaded). In brackets are numbers of respondents.

Factions/military groups		Other (1,950)	Somaliland National Forces (3,844)	Juba Valley Alliance (568)	Hiran Court Forces (461)	RRA Sheik Adan/ Habsade (332)	RRA Hassan Mohamed Nur (262)	Hussein Aidiid (283)	Puntland Darawish Para-Military (193)	Muse Sudi Yalaxow (130)	Mohamed Qaryar (101)	
Reintegration tools												
Return to formal education		28.4	3.6	23.4	13.2	72.6	64.9	15.9	7.3	36.2	66.3	
		9.1	4.4	8.8	7.2	3.3	7.3	3.2	7.3	10.0	6.9	
Public works		2.1	0.3	2.3	3.3	5.4	5.7	1.8	1.6	2.3	2.0	
		2.9	1.4	8.8	5.6	6.9	6.9	1.8	0.5	0	4.0	
Private security sector		2.3	0.5	1.9	1.3	1.8	3.4	0	1.0	0	0	
		5.4	4.6	7.2	0.9	7.5	18.3	4.2	6.7	0	6.9	
Grant for SME		36.4	72.7	42.4	39.7	8.1	11.1	41.7	54.9	34.6	15.8	
		27.1	14.0	27.3	26.7	13.3	14.9	33.2	24.9	24.6	39.6	
Rural integration		7.9	9.0	13.0	17.6	3.9	6.9	6.4	7.3	0.8	5.0	
		12.6	27.0	11.1	28.6	22.3	21.4	17.7	22.3	3.1	2.0	
Training on the job		3.0	0.7	2.8	4.3	5.4	5.0	2.1	0	1.5	1.0	
		8.7	4.4	9.2	8.7	10.8	5.3	3.2	1.0	19.2	9.9	
Vocational training	Electricity	5.1	0.8	4.6	8.0	0.3	0.4	2.1	2.1	6.2	2.0	
		9.5	3.6	6.0	7.6	6.6	6.5	3.5	9.3	11.5	6.9	
	Auto-mechanics	7.2	1.2	2.5	10.4	0.9	0.4	4.9	3.1	13.1	3.0	
		12.1	3.2	4.6	11.3	19.6	10.7	10.2	6.2	23.8	18.8	
	Metal work	0.5	0.1	1.1	0.4	0.3	0	0	0.5	0	0	
		0.2	0.4	1.8	0	2.4	2.7	0	0	0	0	
	Carpentry	0.4	0.4	0.4	0.9	0	0	0	0	0	0	
		0.8	1.6	1.4	0.4	0	0.8	0	0	0	0	
	Masonry	0.2	0.1	0	0	0	0	0	0	0	0	
		0.5	0.9	0	0.2	0.6	1.1	0.4	1.0	0	0	
	Handcrafts	0.2	0	0.7	0	0	0	1.1	0	0	0	
		0.8	1.2	2.6	0.2	3.9	0.8	2.1	1.0	1.5	0	
	Coastal fishing	3.2	0.3	4.4	0.2	0	0	22.3	5.7	2.3	0	
		4.5	1.4	9.2	0	0.3	0	16.6	7.8	0.8	0	
	Other training	0.1	0	0	0.2	0	0	0	0	0	0	
		0.6	0.2	0.4	0.7	0.6	0.8	0	0.5	0	0	
	Other assistance		2.7	1.0	0	0.2	1.2	1.9	0.7	16.6	3.1	2.0
			3.2	3.9	0.7	1.1	1.5	2.3	2.1	11.4	3.8	2.0
No assistance wanted		0.6	9.3	0.5	0.2	0	0.4	1.1	0	0	3.0	
		1.9	27.7	1.1	0.9	0.3	0.4	1.8	0	1.5	3.0	

**Annex 6: Detailed Information on Results**



## Annex 6: Detailed Information on Results

Table A6.15: Reintegration assistance wished by respondents by type of militia/military groups. Numbers indicate percentages in the respective militia type/military group. The first choice is in the upper row, the second choice in the lower (gray-shaded). In brackets are numbers of respondents.

Type of militia/military group		Regional authorities (4070)	Juba Valley Alliance (568)	Sharia court militia (481)	Warlord militia (1722)	Business militia (78)	Other militia e.g, freelance (1090)
<b>Reintegration tools</b>							
Return to formal education		3.8	23.4	15.2	44.7	38.5	24.9
		4.5	8.8	7.5	6.3	12.8	9.5
Public works		0.3	2.3	3.1	3.3	3.8	1.9
		1.4	8.8	5.4	3.7	2.6	3.1
Private security sector		0.5	1.9	1.2	1.6	2.6	2.8
		4.8	7.2	0.8	6.6	1.3	6.9
Grant for SME		71.7	42.4	38.7	24.4	29.5	40.8
		14.7	27.3	26.8	24.4	33.3	26.2
Rural integration		8.8	13.0	17.3	6.0	7.7	8.2
		26.8	11.1	27.4	14.1	10.3	14.2
Training on the job		0.7	2.8	4.2	3.7	2.6	2.6
		4.2	9.2	8.7	10.5	0.0	6.2
Vocational training	Electricity	0.9	4.6	7.7	3.6	2.6	4.4
		3.9	6.0	7.7	7.3	16.7	9.4
	Auto-mechanics	1.3	2.5	10.6	4.6	5.1	7.7
		3.3	4.6	11.6	15.6	14.1	10.3
	Metal work	0.1	1.1	0.4	0.1	1.3	0.7
		0.4	1.8	0.0	0.9	0.0	0.3
	Carpentry	0.3	0.4	0.8	0.1	0.0	0.3
		1.6	1.4	0.4	0.4	0.0	0.7
	Masonry	0.1	0.0	0.0	0.1	0.0	0.1
		0.9	0.0	0.4	0.3	0.0	0.6
	Handcrafts	0.0	0.7	0.0	0.2	0.0	0.2
		1.2	2.6	0.2	1.5	0.0	1.2
	Coastal fishing	0.6	4.4	0.2	5.3	1.3	2.8
		1.7	9.2	0.2	4.0	0.0	5.7
Other training	0.0	0.0	0.2	0.0	0.0	0.1	
	0.2	0.4	0.8	0.4	1.3	0.6	
Other assistance		1.9	0.0	0.2	1.6	5.1	2.3
		4.3	0.7	1.0	2.4	7.7	3.3
No assistance wanted		8.8	0.5	0.2	0.8	0.0	0.3
		26.1	1.1	0.8	1.6	0.0	1.7

## Annex 6: Detailed Information on Results

Table A6.17: First and second choice of reintegration assistance wished: First choice assistance is presented in rows, second preference in columns. What is the second choice of respondents who have certain preferences in respect to their first choice? Numbers indicate percentages of respondents with the respective first preference, who have the specific second preference (in columns). Gray-shaded rows in section 'Vocational Training' are summarized in row 'Total vocational training'. In brackets are numbers of respondents.

1 <sup>st</sup> choice assistance		2 <sup>nd</sup> choice assistance	Return to formal education (503)	Public works (237)	Private security sector (434)	Grant for SME (1644)	Rural Integration (1709)	Training on the job (527)	Vocational training (1681)	Other assistance (266)	No assistance (1123)	Total (8124)
Return to formal education (1471)			0.6	4.6	7.5	32.4	7.2	7.7	37.3	1.5	1.2	18.1
Public works (125)			7.2	0	7.2	24.8	21.6	6.4	29.6	3.2	0	1.5
Private security sector (98)			10.2	1.0	0	30.6	9.2	14.3	30.6	2.0	2.0	1.2
Grant for SME (4268)			7.9	2.9	6.3	2.9	33.6	6.4	19.8	4.6	15.7	52.5
Rural Integration (724)			5.4	2.9	2.5	59.1	2.1	2.5	18.0	3.0	4.6	8.9
Training on the job (162)			6.8	3.7	6.8	23.5	11.1	0.6	45.1	1.9	0.6	2.0
Vocational Training	Electricity (216)		12.5	4.6	0.9	54.6	6.9	0.5	17.1	0.9	1.9	2.7
	Auto-mechanics (291)		13.7	2.1	2.1	53.3	12.0	1.0	13.7	0.3	1.7	3.6
	Metal work (22)		13.6	4.5	0	63.6	4.5	0	9.1	0	4.5	0.3
	Carpentry (27)		3.7	0	0	48.1	22.2	0	7.4	7.4	11.1	0.3
	Masonry (8)		0	0	0	62.5	0	0	25.0	0	12.5	0.1
	Handcrafts (10)		0	0	0	80.0	10.0	0	10.0	0	0	0.1
	Coastal fishing (178)		2.8	0.6	3.9	71.9	12.4	1.7	5.1	0.6	1.1	2.2
	Other training (3)		0	0	0	33.3	33.3	0	0	33.3	0	0.0
Total vocational training (755)			10.1	2.4	2.0	58.5	10.7	0.9	12.3	0.9	2.1	9.3
Other assistance (141)			8.5	0.7	0.0	51.1	14.2	5.7	6.4	7.1	6.4	1.7
No assistance wished (380)			0.3	0.0	0.0	1.1	0.0	0.0	0.5	0.0	98.2	4.7
Total (8124)			6.2	2.9	5.3	20.3	21.0	6.5	20.7	3.3	13.8	100

## Annex 6: Detailed Information on Results